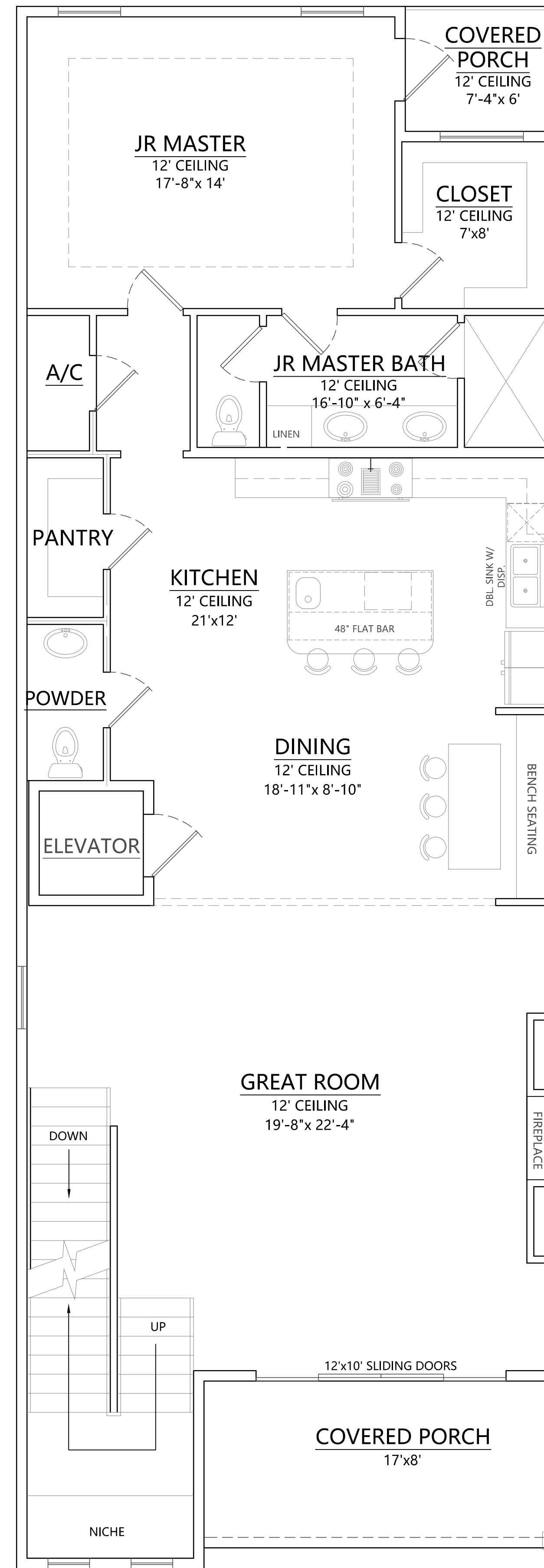


FLOOR PLAN SMALLER HOUSE
GARAGE



FLOOR PLAN
1ST FLOOR

AREA CALCULATIONS:

1ST FLOOR HEATED:	1,681 SF
2ND FLOOR HEATED:	1,507 SF
TOTAL HEATED:	3,188 SF
GARAGE:	1,664 SF
PORCHES:	360 SF
TOTAL UNDER ROOF:	5,212 SF

SCALE: 1/4" = 1'-0"

TERRY MORAN ENGINEERING
P.O. BOX 4075
BILOXI, MS 39535
PH 228.896.4733
FAX 228.896.6768
TERRY MORAN,
P.E., P.L.S.

23-002

In Association With

FA FOUNTAIN & ASSOCIATES
CIVIL AND COMMERCIAL DESIGN
1822 15th Street, Ste. 12
Gulfport, MS 39501
228-861-5209

Date 08-22-2023
Drawn By C.A.B.
Check By T.J.M.
REV _____

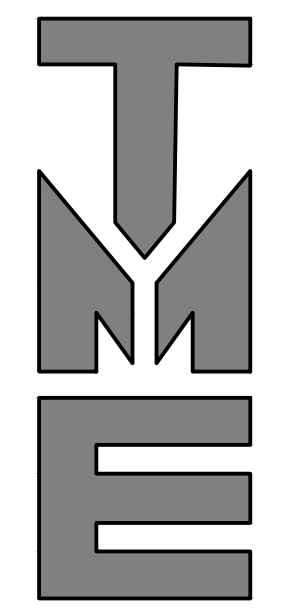
A NEW HOME IN
CRISTIANO BOARDWALK
SUBDIVISION
BEACH BLVD
BILOXI, MS 39531

B1



FLOOR PLAN
2ND FLOOR

SCALE: 1/4"=1'-0"



23-002

TERRY MORAN
ENGINEERING

P.O. BOX 4075
BILOXI, MS 39535
PH 228.896.4733
FAX 228.896.6768

TERRY MORAN,
P.E., P.L.S.

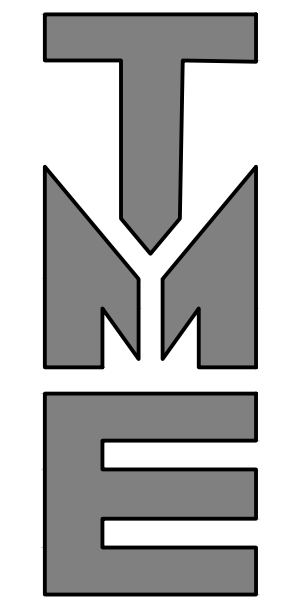
In Association With

FA | FOUNTAIN & ASSOCIATES
CIVIL AND COMMERCIAL DESIGN
1822 15th Street, Ste. 12
Gulfport, MS 39501
228-861-5209

Date 08-22-2023
Drawn By C.A.B.
Check By T.J.M.
REV.

A NEW HOME IN
CRISTIANO BOARDWALK
SUBDIVISION
BEACH BLVD
BILOXI, MS 39531

B1.1



23-002

TERRY MORAN
ENGINEERING

P.O. BOX 4075
BILOXI, MS 39535

PH 228.896.4733
FAX 228.896.6768

TERRY MORAN,
P.E., P.L.S

In Association With

FA FOUNTAIN & ASSOCIATES
CIVIL AND COMMERCIAL DESIGN
1822 15th Street, Ste. 12
Gulfport, MS 39501
228-861-5209

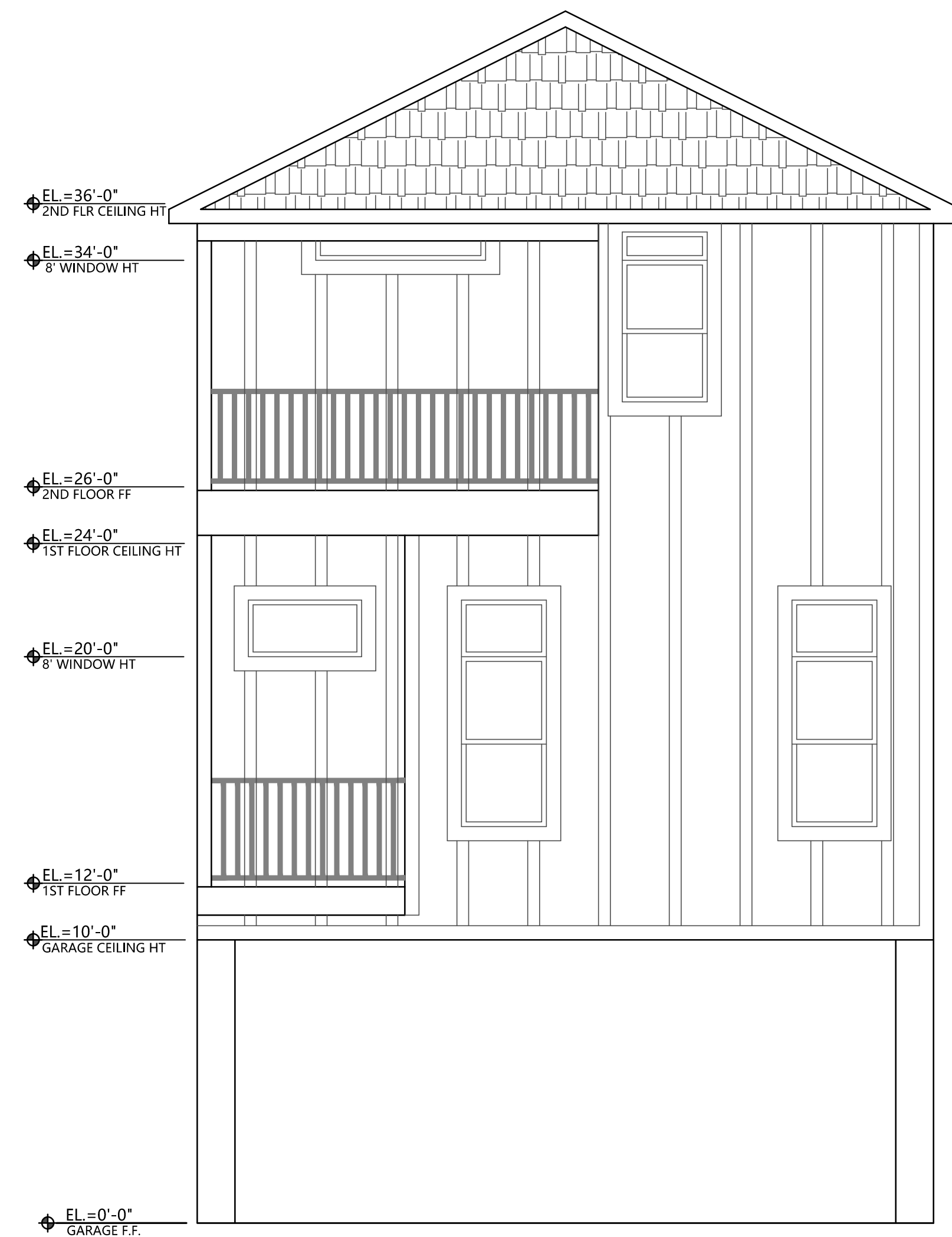
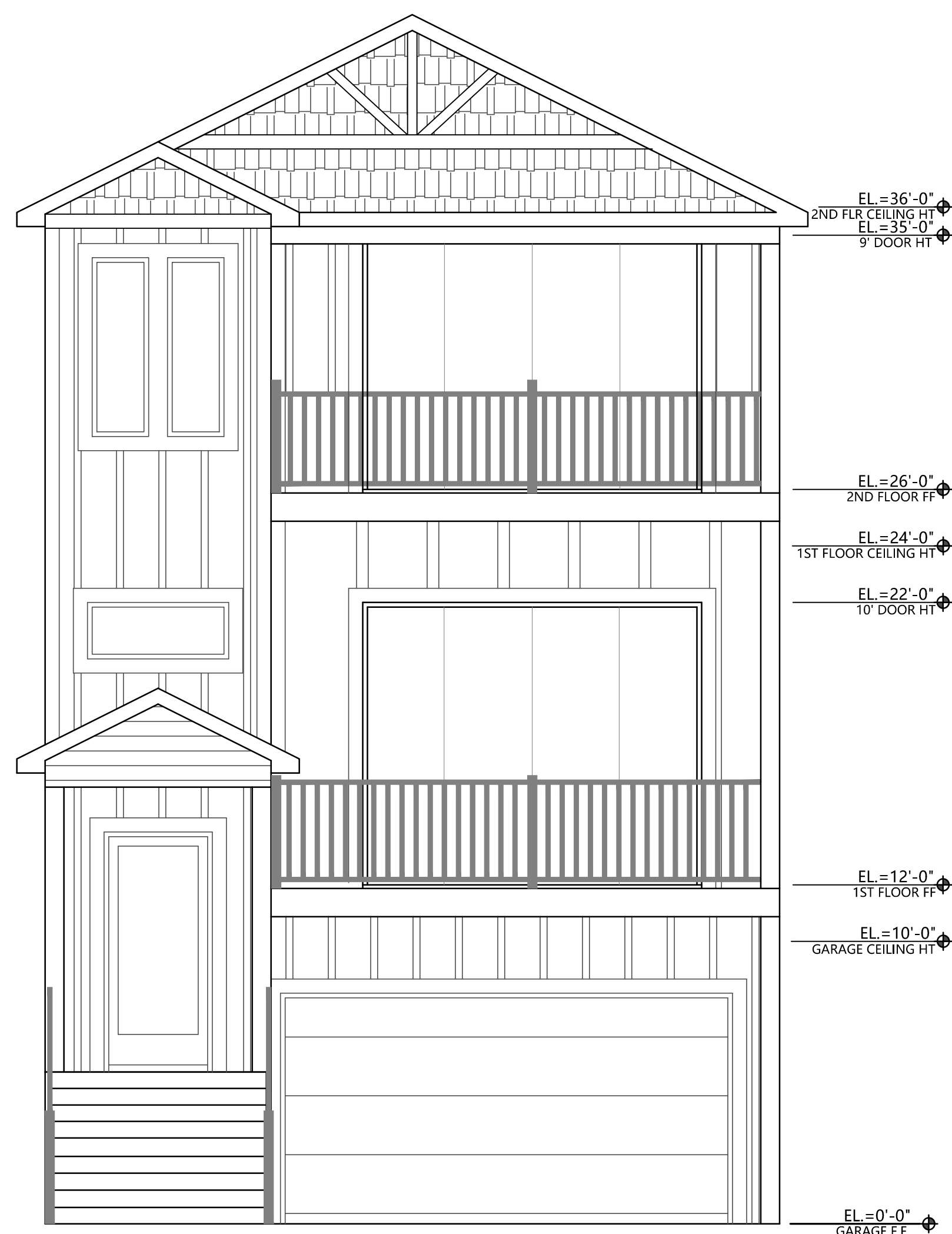
Date 08-22-2023

Drawn By C.A.B.

Check By T.J.M.

REV _____

A NEW HOME IN
CRISTIANO BOARDWALK
SUBDIVISION
BEACH BLVD
BILOXI, MS 39531

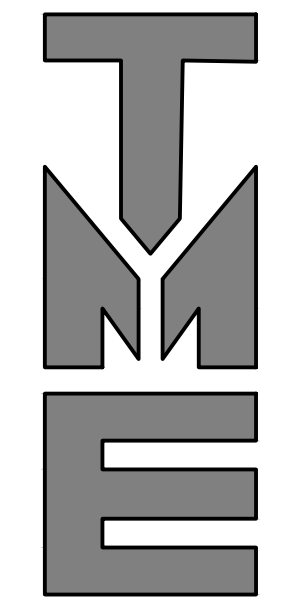


FRONT ELEVATION

SCALE: 1/4" = 1'-0"

REAR ELEVATION

SCALE: 1/4" = 1'-0"



23-002

TERRY MORAN
ENGINEERING

P.O. BOX 4075
BILOXI, MS 39535

PH 228.896.4733
FAX 228.896.6768

TERRY MORAN,
P.E., P.L.S

In Association With

FA FOUNTAIN & ASSOCIATES
CIVIL AND COMMERCIAL DESIGN
1822 15th Street, Ste. 12
Gulfport, MS 39501
228-861-5209

Date 08-22-2023

Drawn By C.A.B.

Check By T.J.M.

REV _____

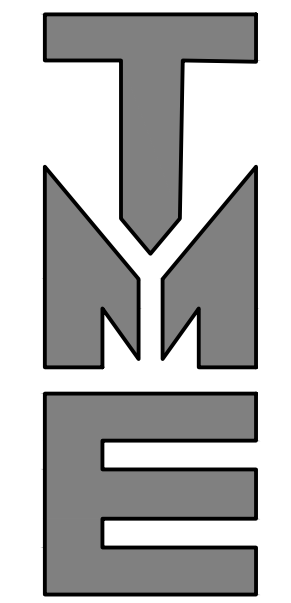
A NEW HOME IN
CRISTIANO BOARDWALK
SUBDIVISION
BEACH BLVD
BILOXI, MS 39531

B2.1



LEFT ELEVATION

SCALE: 1/4"=1'-0"



23-002

TERRY MORAN
ENGINEERING

P.O. BOX 4075
BILOXI, MS 39535

PH 228.896.4733
FAX 228.896.6768

TERRY MORAN,
P.E., P.L.S

In Association With

FA FOUNTAIN & ASSOCIATES
CIVIL AND COMMERCIAL DESIGN
1822 15th Street, Ste. 12
Gulfport, MS 39501
228-861-5209

Date 08-22-2023

Drawn By C.A.B.

Check By T.J.M.

REV _____

A NEW HOME IN
CRISTIANO BOARDWALK
SUBDIVISION
BEACH BLVD
BILOXI, MS 39531



RIGHT ELEVATION

SCALE: 1/4"=1'-0"

B2.2