

AREA CALCULATIONS:

|                   |          |
|-------------------|----------|
| 1ST FLOOR HEATED: | 2,078 SF |
| 2ND FLOOR HEATED: | 1,987 SF |
| TOTAL HEATED:     | 4,065 SF |
| GARAGE:           | 2,098 SF |
| PORCHES:          | 592 SF   |
| TOTAL UNDER ROOF: | 6,755 SF |

In Association With

**FA FOUNTAIN & ASSOCIATES**  
CIVIL AND COMMERCIAL DESIGN  
1822 15th Street, Ste. 12  
Gulfport, MS 39501  
228-861-5209

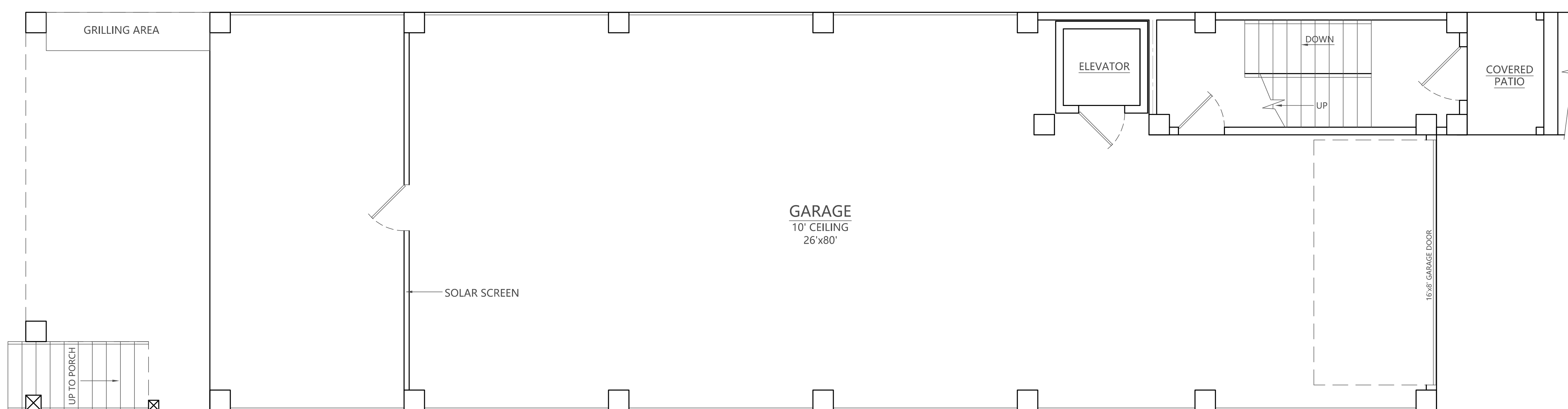
Date 08-22-2023  
Drawn By C.A.B.  
Check By T.J.M.  
REV \_\_\_\_\_

A NEW HOME IN  
CRISTIANO BOARDWALK  
SUBDIVISION  
BEACH BLVD  
BILOXI, MS 39531

FLOOR PLAN- 2 STORY

1ST FLOOR

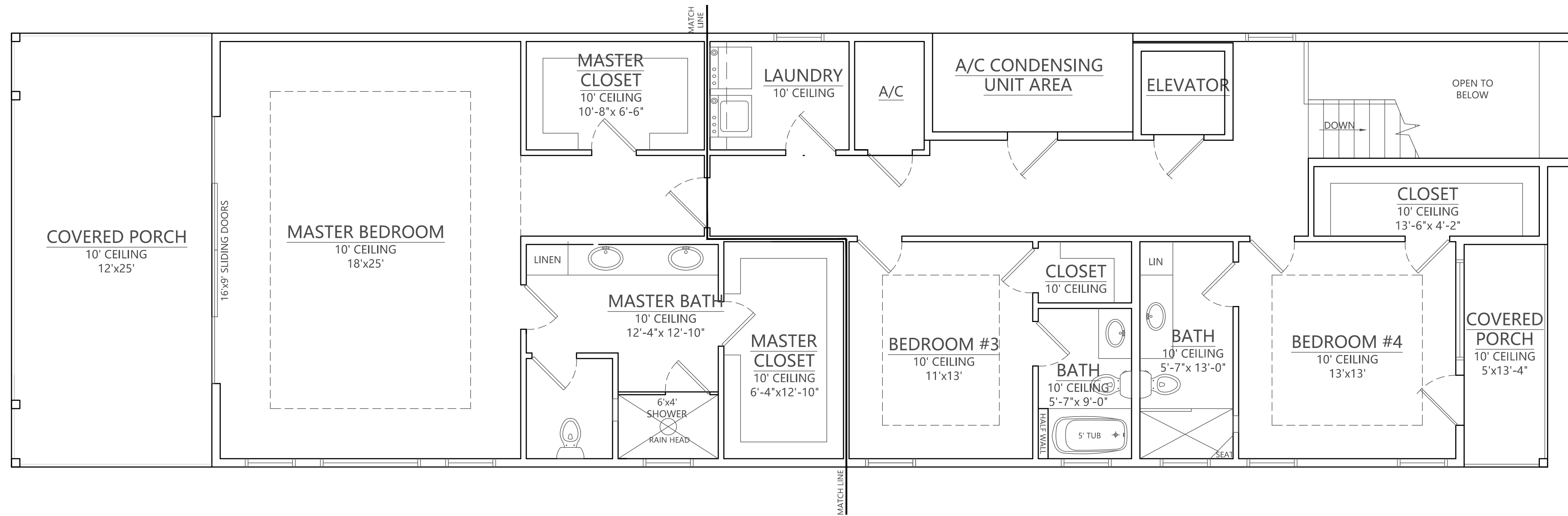
SCALE: 1/4"=1'-0"



FLOOR PLAN

GARAGE

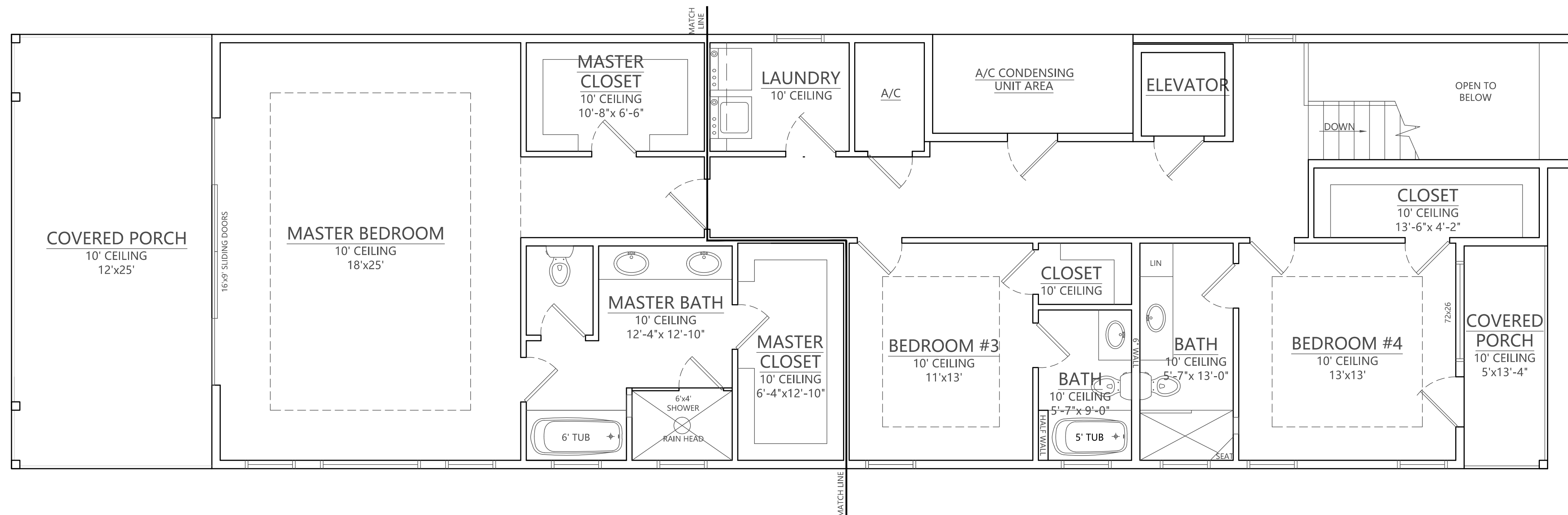
SCALE: 1/4"=1'-0"



**FLOOR PLAN OPTION 1A**

2nd FLOOR

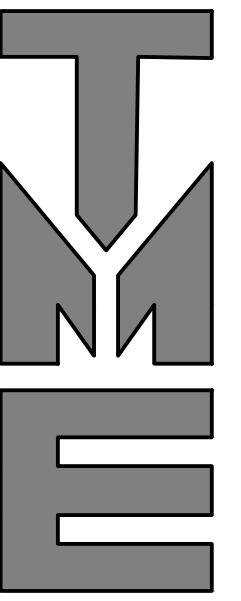
SCALE: 1/4"=1'-0"



**FLOOR PLAN OPTION 1B**

2nd FLOOR

SCALE: 1/4"=1'-0"



23-002

TERRY MORAN  
ENGINEERING

P.O. BOX 4075  
BILOXI, MS 39535  
PH 228.896.4733  
FAX 228.896.6768

TERRY MORAN,  
P.E., P.L.S

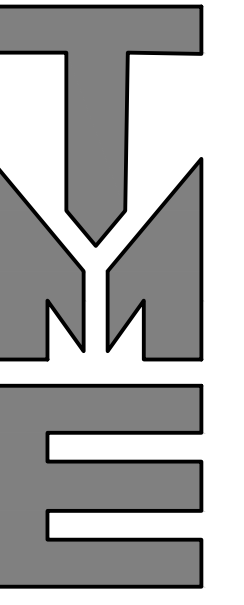
In Association With

**FA** FOUNTAIN & ASSOCIATES  
CIVIL AND COMMERCIAL DESIGN  
1822 15th Street, Ste. 12  
Gulfport, MS 39501  
228-861-5209

Date 08-22-2023  
Drawn By C.A.B.  
Check By T.J.M.  
REV

A NEW HOME IN  
CRISTIANO BOARDWALK  
SUBDIVISION  
BEACH BLVD  
BILOXI, MS 39531

B1.1



23-002

TERRY MORAN  
ENGINEERING

P.O. BOX 4075  
BILOXI, MS 39535  
PH 228.896.4733  
FAX 228.896.6768

TERRY MORAN,  
P.E., P.L.S.

In Association With

**FA** | **FOUNTAIN & ASSOCIATES**  
CIVIL AND COMMERCIAL DESIGN  
1822 15th Street, Ste. 12  
Gulfport, MS 39501  
228-861-5209

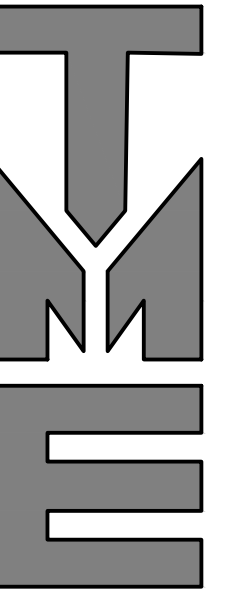
Date: 08-22-2023  
Drawn By: C.A.B.  
Check By: T.J.M.  
REV: \_\_\_\_\_

A NEW HOME IN  
CRISTIANO BOARDWALK  
SUBDIVISION  
BEACH BLVD  
BILOXI, MS 39531

B2



FRONT ELEVATION OPTIONS



23-002

TERRY MORAN  
ENGINEERING

P.O. BOX 4075  
BILOXI, MS 39535  
PH 228.896.4733  
FAX 228.896.6768

TERRY MORAN,  
P.E., P.L.S.

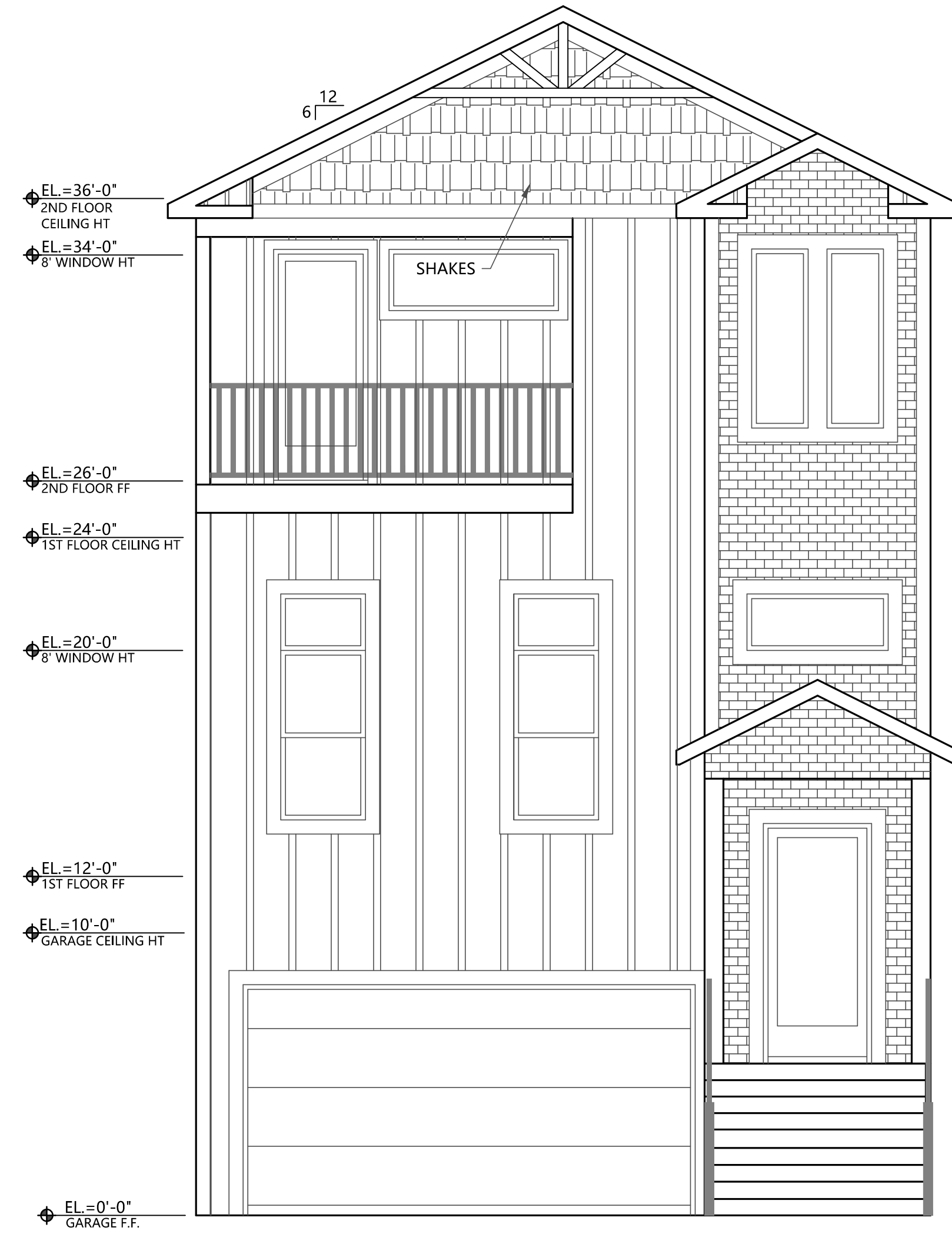
In Association With

**FA** | **FOUNTAIN & ASSOCIATES**  
CIVIL AND COMMERCIAL DESIGN  
1822 15th Street, Ste. 12  
Gulfport, MS 39501  
228-861-5209

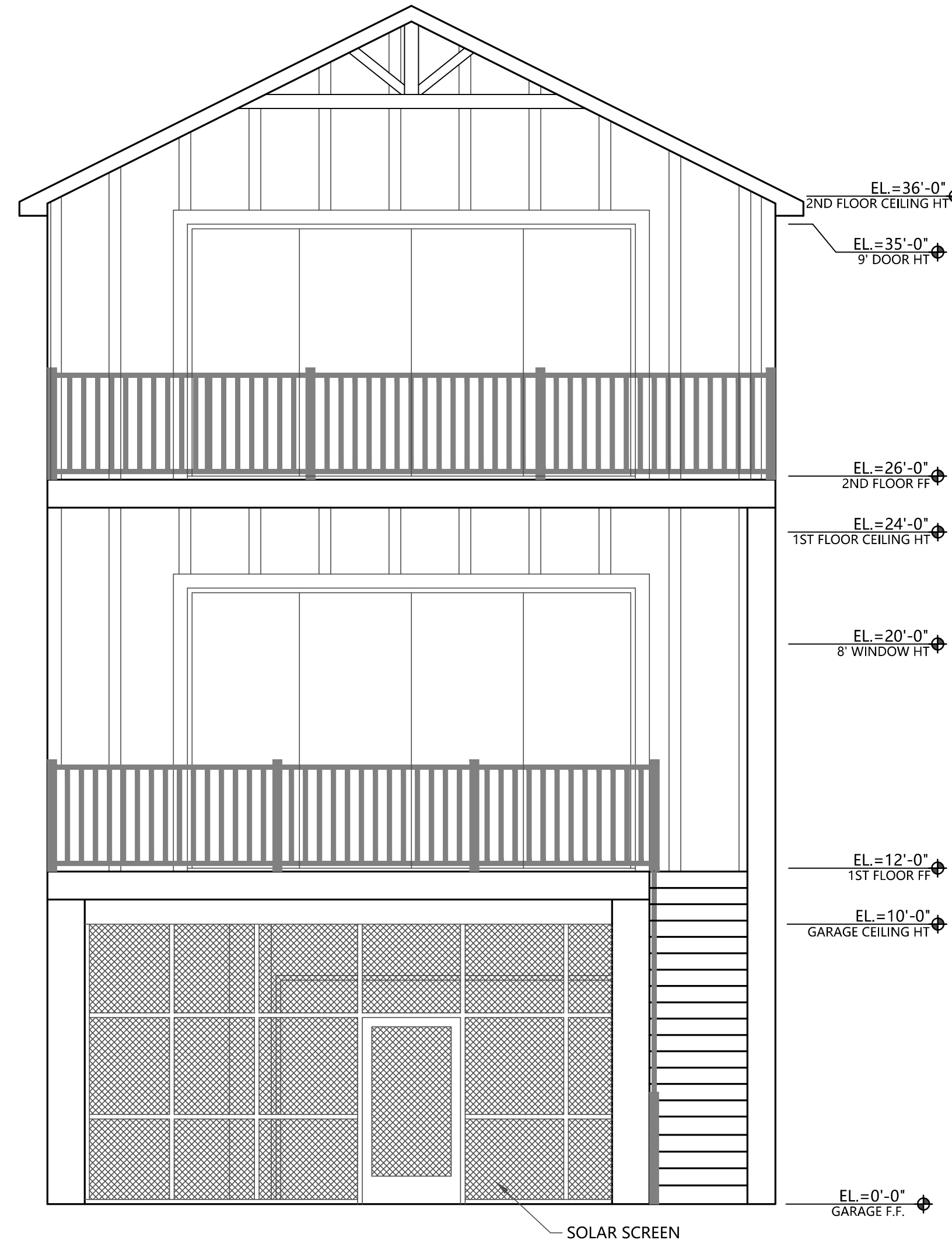
Date 08-22-2023  
Drawn By C.A.B.  
Check By T.J.M.  
REV \_\_\_\_\_

A NEW HOME IN  
CRISTIANO BOARDWALK  
SUBDIVISION  
BEACH BLVD  
BILOXI, MS 39531

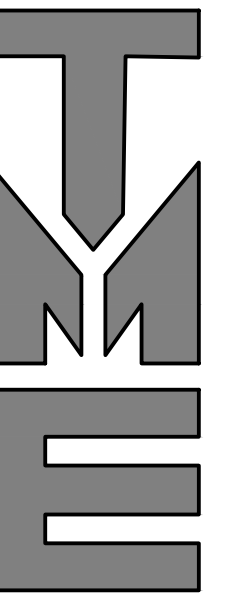
B2.1



FRONT ELEVATION OPTION



REAR ELEVATION



23-002

TERRY MORAN  
ENGINEERING

P.O. BOX 4075  
BILOXI, MS 39535

PH 228.896.4733  
FAX 228.896.6768

TERRY MORAN,  
P.E., P.L.S

In Association With

**FA** FOUNTAIN & ASSOCIATES  
CIVIL AND COMMERCIAL DESIGN  
1822 15th Street, Ste. 12  
Gulfport, MS 39501  
228-861-5209

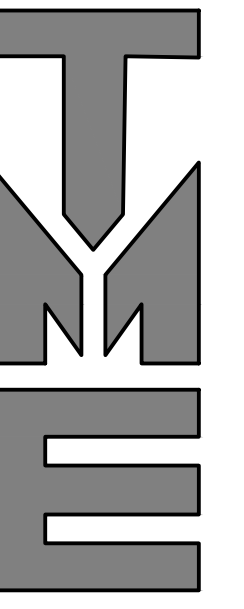
Date 08-22-2023  
Drawn By C.A.B.  
Check By T.J.M.  
REV \_\_\_\_\_

A NEW HOME IN  
CRISTIANO BOARDWALK  
SUBDIVISION  
BEACH BLVD  
BILOXI, MS 39531



RIGHT ELEVATION

B2.2



23-002

TERRY MORAN  
ENGINEERING

P.O. BOX 4075  
BILOXI, MS 39535

PH 228.896.4733  
FAX 228.896.6768

TERRY MORAN,  
P.E., P.L.S.

In Association With

**FA** FOUNTAIN & ASSOCIATES  
CIVIL AND COMMERCIAL DESIGN  
1822 15th Street, Ste. 12  
Gulfport, MS 39501  
228-861-5209

Date 08-22-2023

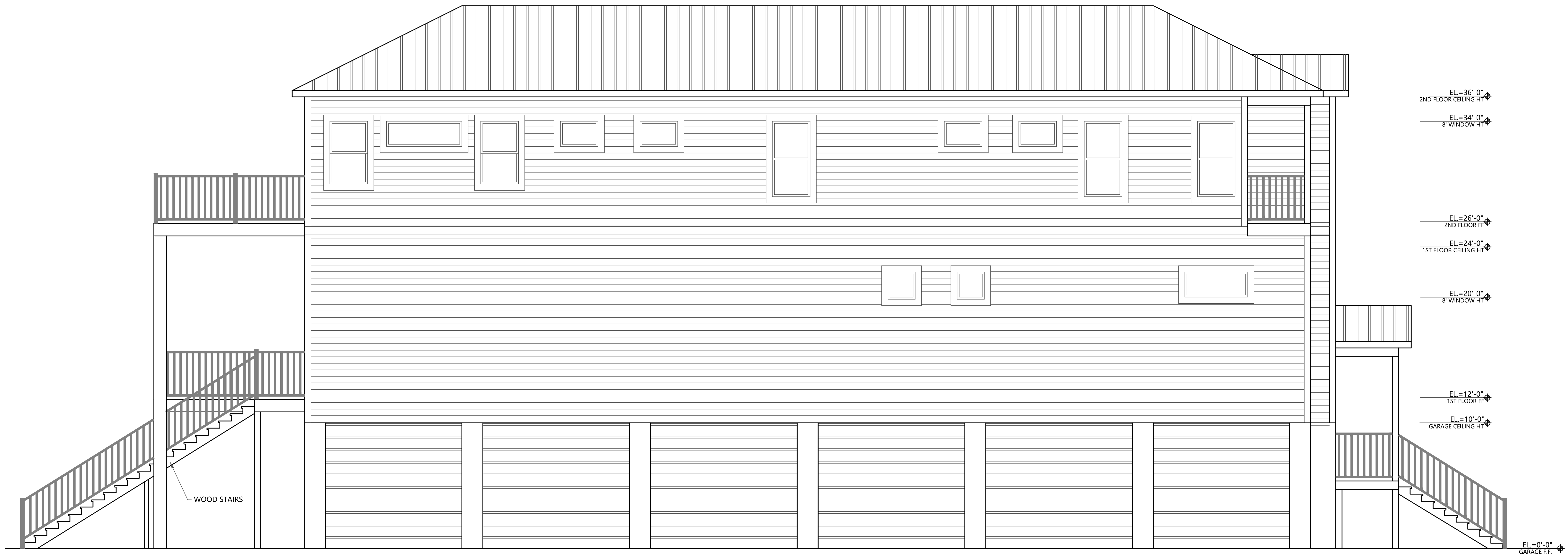
Drawn By C.A.B.

Check By T.J.M.

REV \_\_\_\_\_

A NEW HOME IN  
CRISTIANO BOARDWALK  
SUBDIVISION  
BEACH BLVD  
BILOXI, MS 39531

B2.3



LEFT ELEVATION

SCALE: 1/4" = 1'-0"